



BE YOUR OWN INSPECTOR...

M35

ARMAMENT SUBSYSTEM

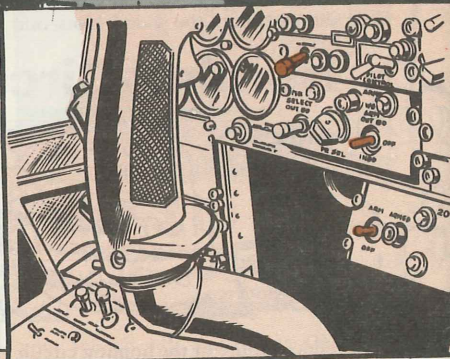
THAT
TICKLES,
CONNIE...

BEFORE YOU
START... BE SURE
BATTERY AND
ARMAMENT SWITCHES
ARE OFF! AND CIRCUIT
BREAKERS PULLED!

Your fast-firing Super Snake—AH-1G with the 20-MM Gatling-type gun—needs super PM care to keep it mission-ready.

This maxi-size minigun gets an overall eye treatment for an all-parts-secured check. Like maybe lockwashers, safety wiring, cotter pins, brackets and cable assemblies.

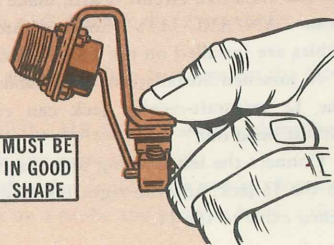
Be your own inspector and give these spots your super special check. If anything's wrong, correct it—like now.



XM195 GUN

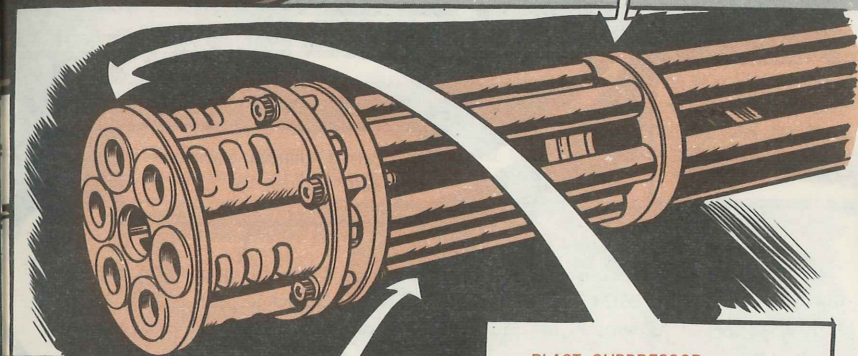
FIRING CONTACT ASSEMBLY —

Bent, twisted, loose, dirty. Loose contact pin in cam. Bottom of contact cam damaged. Spring pin hole in cam elongated. Broken, weak springs. Cracked, broken, connector or potting compound. Broken, damaged conductor. Worn, damaged sleeving.



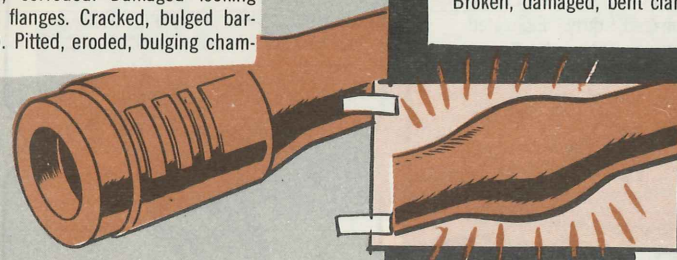
MUST BE
IN GOOD
SHAPE

CENTER CLAMP ASSEMBLY —
Burled, broken. Cotter pin missing.



BARRELS — Dirty, powder-fouled, rusty, corroded. Damaged locking lugs, flanges. Cracked, bulged barrel(s). Pitted, eroded, bulging chambers.

BLAST SUPPRESSOR — Broken, damaged, dirty, loose, burled. Broken, damaged, bent clamp, disc.



BOLT ASSEMBLIES—Dirty, dry. Operation sluggish.

Damaged roller.

Burred, galled shaft assembly.

Cracked, spreading roller shaft forks.

Galled, worn, burred trackways.

Top of roller shaft galled, burred.

Burred, cracked locking block.

Broken firing pin, spring.

Burred, chipped, cracked worn extractor lips.

Roller and locking block won't function free 'n' easy. Loose firing pin cam. Firing pin sticks out more'n 0.023 inch when locking block is unlocked (up). More'n 0.048 inch when locked (down). Firing pin, firing pin cam insulators cracked, worn too much.

RECOIL ADAPTER ASSEMBLY — Loose, damaged, dirty. Elongated mounting holes. Damaged housing, mounts. NOTE: If one adapter's no good, replace both of 'em!

END PLATE— Dented, burred, scarred, worn mounting socket. Galled, burred, worn rotor bearing surface or race.

HOUSING ASSEMBLY—Dirty, cruddy, too much oil. Bent, damaged cover lock pins. Chipped, burred, cracked, worn main and clearing cam surfaces. Galled, cracked, worn unlocking cams. Damaged indexing pin assembly. Worn, galled locking cam. Bent, cracked, damaged fingers on housing.

DAMAGED INDEX PIN

ELECTRICAL CONNECTOR

FEEDER CLUTCH SOLENOID

ROTOR ASSEMBLY—Dry, dirty, corroded, rusty. Damaged barrel locking lugs. Worn, chipped locking wells. Flattened, broken, damaged stops. Cracked, damaged stub rotor. Binding, damaged needle bearings. Cracked, binding housing ball bearings. Worn, chipped rotor gear teeth. Bent, galled, burred, twisted tracks. Cracked, flaked, burred, worn track plating. Pitted, dented, grooves (or ball pathways) in bearing housing.

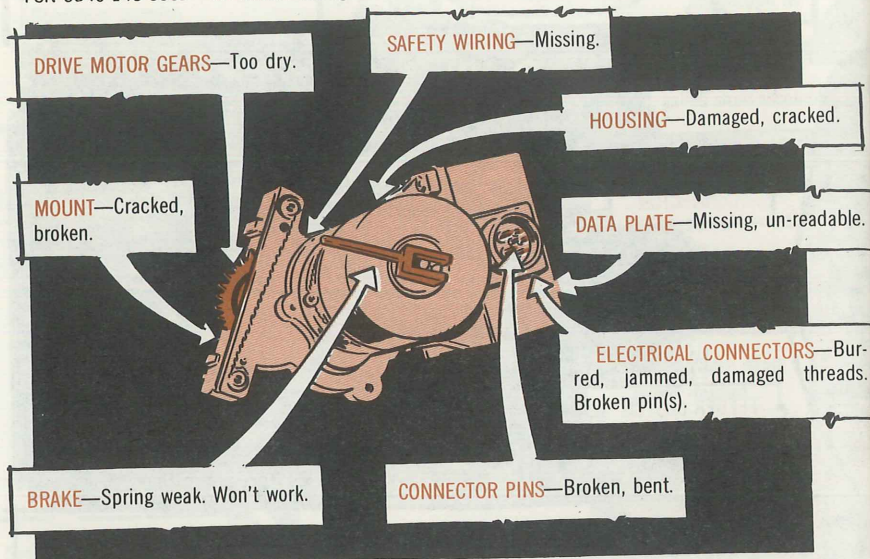
WORN TRACK PLATING

DAMAGED NEEDLE BEARINGS

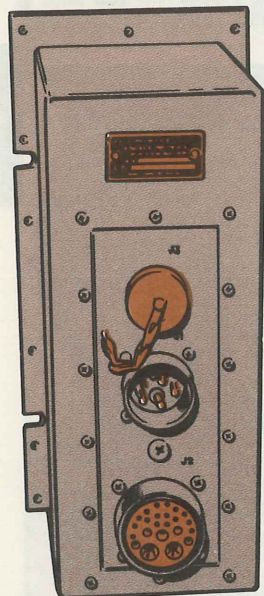
DAMAGED BARREL LOCKING LUG

GUN DRIVE ASSEMBLY

GUN DRIVE MOTOR—Filter box legs crack easy-like. Have your DS unit install a "Z" bracket—FSN 5340-148-5302—for added strength.



FIRING CONTROL UNIT



COVER—Damaged, busted, dented, corroded. J1, J2 electrical connector-pins missing, bent. Threads damaged. J3 test connector safety chain, cap missing.

40

DATA PLATE —
MISSING,
UN-READABLE.

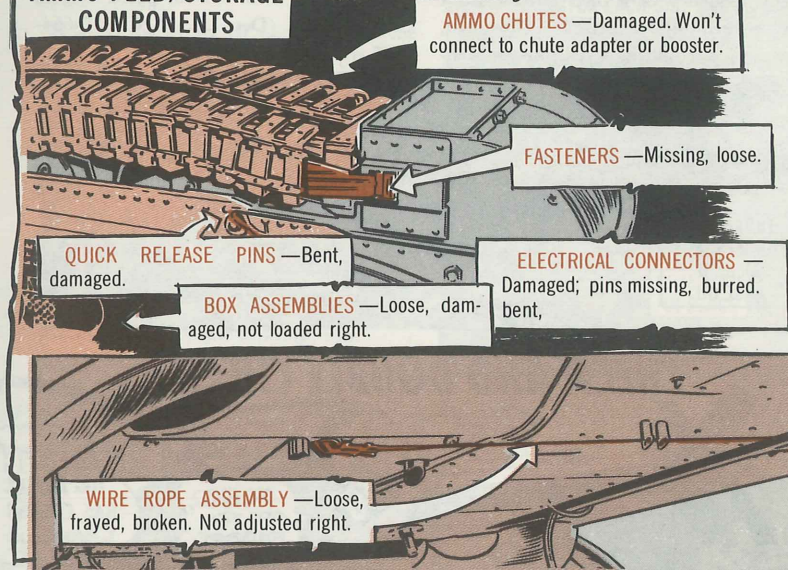
GUN MOUNT ASSEMBLY

WING MOUNT—Broken, damaged, crooked. Missing washers, bolts.

REAR POST ASSEMBLY—Sleeve bushing worn flat on top.



AMMO FEED/STORAGE COMPONENTS



A couple of last words, Podner. Watch c-a-r-e-f-u-l-l-y for any missing parts, excessively worn connections, data or caution plates, printed poop. How 'bout chafed, bent, twisted, burred, bared or frayed parts? Any item collapsed, torn, cut or deteriorated?

YOU'LL NEED ONLY 2 BOOKS
FOR HOMEWORK: TM9-1005-299-12
(MAY 72) AND LO9-1005-299-12
(JUNE 72).

